

RIVA 68 DIABLO



Riva 68 Diablo - 2023 - 21m - 2 x 1550 hp MAN - 3 + 1 Kabin - 3.500.000 EU

WELCOME ABOARD

Riva 68 Diabla is a sport yacht model and is produced by Riva Yachts. Features may vary from model to model and generally depend on the manufacturer. However, some features for the Riva 68 Diabla model in general may include:

1. Dimensions: Approximately 20 meters (68 feet) long.
2. Design: Featuring Riva Yachts' leading design features. This includes a stylish and luxurious design.
3. Interior Layout: Equipped with luxurious interiors. These interiors are combined with modern technology and high-quality materials.
4. Power: Usually equipped with high-performance engines. Engines can have a variety of power options.
5. Speed: It is a fast sport yacht and speed performance on a particular model may vary depending on engine selection.
6. Comfort: It has comfort features such as spacious interiors, comfortable seating areas and sunbathing areas to offer a luxurious lifestyle.
7. Technology: Includes advanced maritime technologies and navigation systems.
8. Capacity: It is usually designed to accommodate a large number of guests.

These features represent typical features of the Riva 68 Diabla, although the exact specifications of a particular model may vary depending on the manufacturer and model year.



GENERAL INFORMATION

YEAR: 2023

LENGTH: 20.67 M

BEAM: 5.29 M

BUILDER: RIVA YACHTS

CATEGORY: MOTOR YACHT

CABINS: 3 GUEST + 1 CREW

LOCATED IN: TURKEY

PRICE: €3,500,000 EX VAT

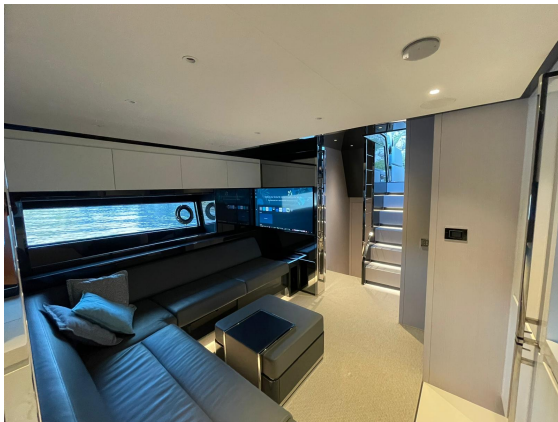
SALE STATUS: AVAILABLE



SPECIFICATION

MAIN CHARACTERISTICS

| | | | |
|------------------------------------|-----------------|-------------------------------|--------------------------|
| ENGINES: | 2 x MAN 1550CR | TOP SPEED: | Around 37 Knots |
| LOA (Lenght overall): | 20,67 m | CRUISING SPEED: | Around 33 Knots |
| MAXIMUM BEAM: | 5,29 m | FUEL TANK CAPACITY: | 3.800 lt |
| DEPTH UNDER PROPELLERS: | 1,78 m | WATER TANK CAPACITY: | 600 lt |
| DISPLACEMENT UNLADEN: | 37,0 t | NR. CABINS: | 3 |
| DISPLACEMENT LADEN: | 44,0 t | NR. BATHROOMS: | 3 |
| MAXIMUM CAPACITY: | 16 People | HULL COLOUR: | SHARK GREY |
| DESIGN CATEGORY CE 2003/44: | A | INTERIOR TIMBER: | ICE OAK WOOD |
| FLAG: | Marshall Island | ENGINE HOURS: | 73 as of 25/09/23 |
| LYING/VISIBLE: | Turkey | GENERATOR HOURS: | 486 as of 25/09/23 |
| STATUS: | In the water | SEAKEEPER (NG6) HOURS: | 330 as of 25/09/23 |



SPECIFICATION

EXTRA ACCESSORIES INSTALLED ONBOARD:

- ✓ Upgrade generator Onan 19,0kW (instead of 17,5kW foreseen as standard)
- ✓ Proportional stern thruster
- ✓ Proportional bow thruster
- ✓ Metallic Version
- ✓ Electronic safe diff from storage in lower deck
- ✓ Electric curtains
- ✓ Ambient lights
- ✓ Cockpit teak with grey lines like grey deck
- ✓ Bow sunshade with carbon poles
- ✓ Automatic bimini in MD cockpit
- ✓ Cleats in fixed aft platform
- ✓ Hydraulic swim ladder
- ✓ Cocktail accessories
- ✓ Cockpit Mahogany Furniture's top
- ✓ Plastic transparent closure in cockpit
- ✓ Additional pouf cockpit
- ✓ Gyro Stabilizer
- ✓ White underwater lights on the transom
- ✓ Ice maker
- ✓ Additional drawer fridge in the cockpit
- ✓ Washer dryer maschine understairs
- ✓ Dimmer all ov the boat
- ✓ Grill in the cockpit
- ✓ Radar antenna radome Simrad Broadband 4G
- ✓ TV 50" Upgrade with apple TV in master cabin
- ✓ TV 50" Upgrade with Apple TV in Salon
- ✓ TV 32" Apple VIP
- ✓ Automatic battery charger for generator
- ✓ Inverter 2500 w
- ✓ Internal USB Socket
- ✓ Tender Williams 345 Sportjet
- ✓ Cockpit elektrik hi-low table
- ✓ Teak with gray caulking on side walks and bow
- ✓ Water Maker 130 lt/h Idromar





MOD MARINE



MOD



MOD MARINE



MOD M A T H E V E





